



## 9 Greys Road, Pontypool, NP4 5SH

### Guide price £180,000



\*\*\*GUIDE PRICE £180,000-£190,000\*\*\* One2One Estate Agents are pleased to offer for sale this semi detached property situated in a popular area of Pontypool, with easy access to the town centre and local schools, plus having transport links close by, making it ideal for commuting. The property briefly comprises entrance hall with door to front...

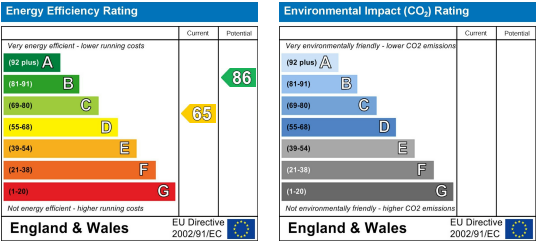
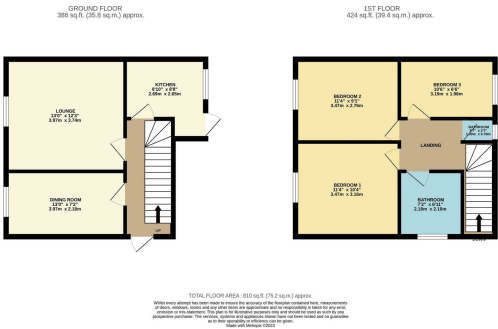




MAIN DESCRIPTION

\*\*\*GUIDE PRICE £180,000-£190,000\*\*\* One2One Estate Agents are pleased to offer for sale this semi detached property situated in a popular area of Pontypool, with easy access to the town centre and local schools, plus having transport links close by, making it ideal for commuting. The property briefly comprises entrance hall with door to front, radiator, stairs to first floor and doors to ground floor accommodation. The lounge has window to front with views, separate dining room with window to front and fitted kitchen with a range of base and wall units, work surface over, breakfast bar, space for appliances, pantry and door to rear. To the first floor are three bedrooms, shower room offering wash hand basin, shower cubicle with power shower, heated towel rail and window to rear and separate wc. The rear garden is mainly to lawn, patio area, two brick built sheds, outside wc and side access. The front offers a lawn area and path to front door. NO CHAIN.

COUNCIL TAX BAND: C



These particulars, whilst believed to be accurate are set out as a general outline only for guidance and do not constitute any part of an offer or contract. Intending purchasers should not rely on them as statements of representation of fact, but must satisfy themselves by inspection or otherwise as to their accuracy. No person in this firms employment has the authority to make or give any representation or warranty in respect of the property.